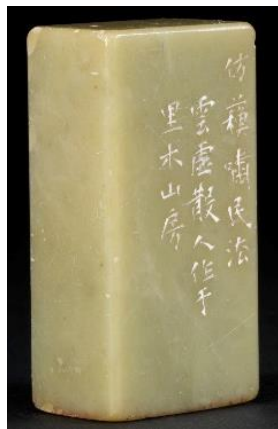


柯有榛 (1814–1885)

柯有榛，广东南海（今广州）人。1814–1885。字云虚、云虚，自号里木山人，又号有辛、云虚散人，别署迂道人。书斋名号为里木山房。他曾主持伍崇曜的南海粤雅堂多年，经常为粤中名士刻印。精刻印，近浙派，时有吴门印人常云生游广东，常云生为杨澥高弟，云虚与他和吴蓉浦交往，遂通印学，所作卓然自立。近人嘉善沈禹钟于《印人杂咏》将他与黄土陵并称。儿子兆明、兆良亦能刻印。辑有《里木山房印谱》、《里木山房印存》。

KE Youzhen (1814–1885)

Ke Youzhen (1814–1885), a native of Nanhai (present-day Guangzhou), Guangdong, courtesy name Yunxu, literary names Limu shanren, Youxin, Yunxu sanren and Yudaoren, had worked Wu Zhongyao's library Yueya tang for many years. He named his studio Limu shanfang. He was renowned for his seal carving in the style of the Zhe School, making seals for a number of Guangdong elites. Initially, when Suzhou seal carver Chang Yunsheng, who was a student of Yang Xie, sojourned in Guangdong, Ke became friends with him, through whom he learned the art of seal carving. Ke is mentioned in one breath with Huang Shiling in Jiashan literati Shen Yuzhong's *Yinren zayong*. His sons Ke Zhaoming and Ke Zhaoliang were seal carvers as well. His works include *Limu shanfang yinpu* and *Limu shanfang yincun*.



C1994.0258

平头钮长方形白文五字印
清嘉庆至光绪（1814–1885）
柯有榛
石（青田）

Rectangular Seal with Five Incised Characters
Qing Jiaqing to Guangxu (1814–1885)
KE Youzhen
Stone (Qingtian)

印文： 丹诚励匪躬

Seal characters: Dancheng li feigong

尺寸： 纵：1.3 厘米
横：2.1 厘米
高：4.1 厘米

Size: W: 1.3 cm
L: 2.1 cm
H: 4.1 cm